

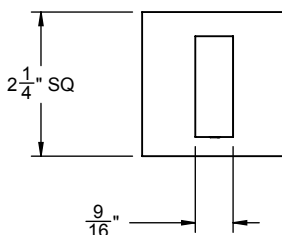
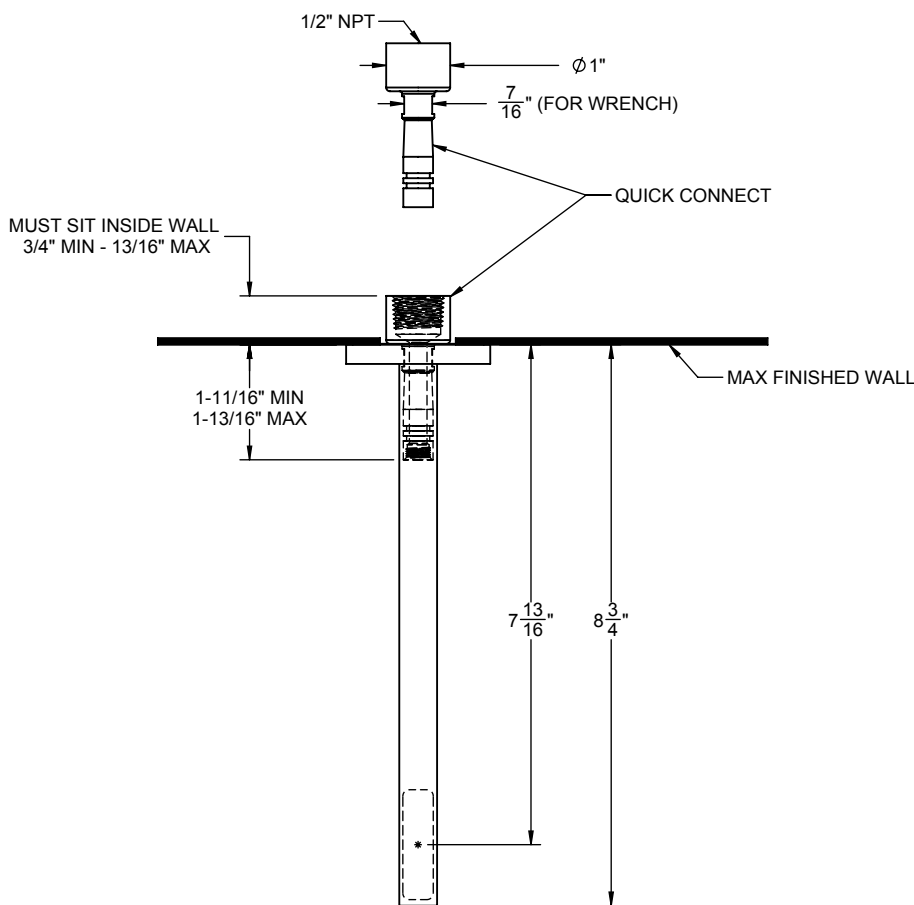
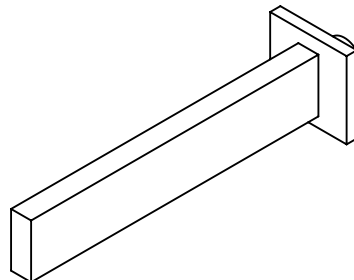
D-E3-77

Features

- 7-13/16" wall to center of flow
- 7.5 gpm (28.4 L/min) max flow rate
- Quick connect
- For use with StyleTherm, 3-VR or 2-VR valves
- All brass construction
- Over 30 finishes including 13 PVD finishes

Codes/Standards Applicable

- Product meets or exceeds the following:
- ASME A112.18.1/CSA B125.1



THROUGH-HOLE SPECIFICATIONS

	MIN	RECOMENDED
SPOUT: Ø	1-1/4"	1-3/8"