



California Faucets®

**Montara™**

**WALL LAVATORY**

## Features

- Over 28 finishes including 13 PVD finishes
- All brass construction
- 1.2 gpm (4.5 L/min) max flow rate
- Rough valve (CF-VL-R) sold separately

## Codes/Standards

Product meets or exceeds the following:

- ASME A112.18.1/CSA B125.1
- NSF/ANSI 61 & NSF/ANSI 372
- CEC & DOE
- Commonwealth of MA
- EPA WaterSense High Efficiency Lavatory
- ADA compliant

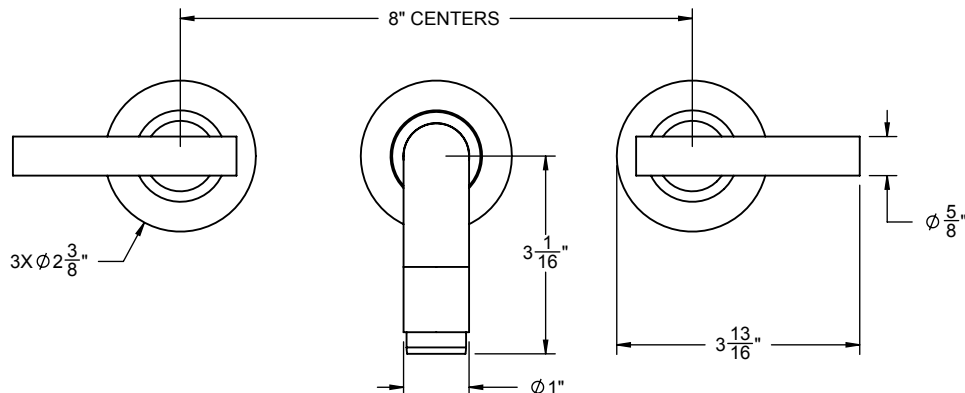
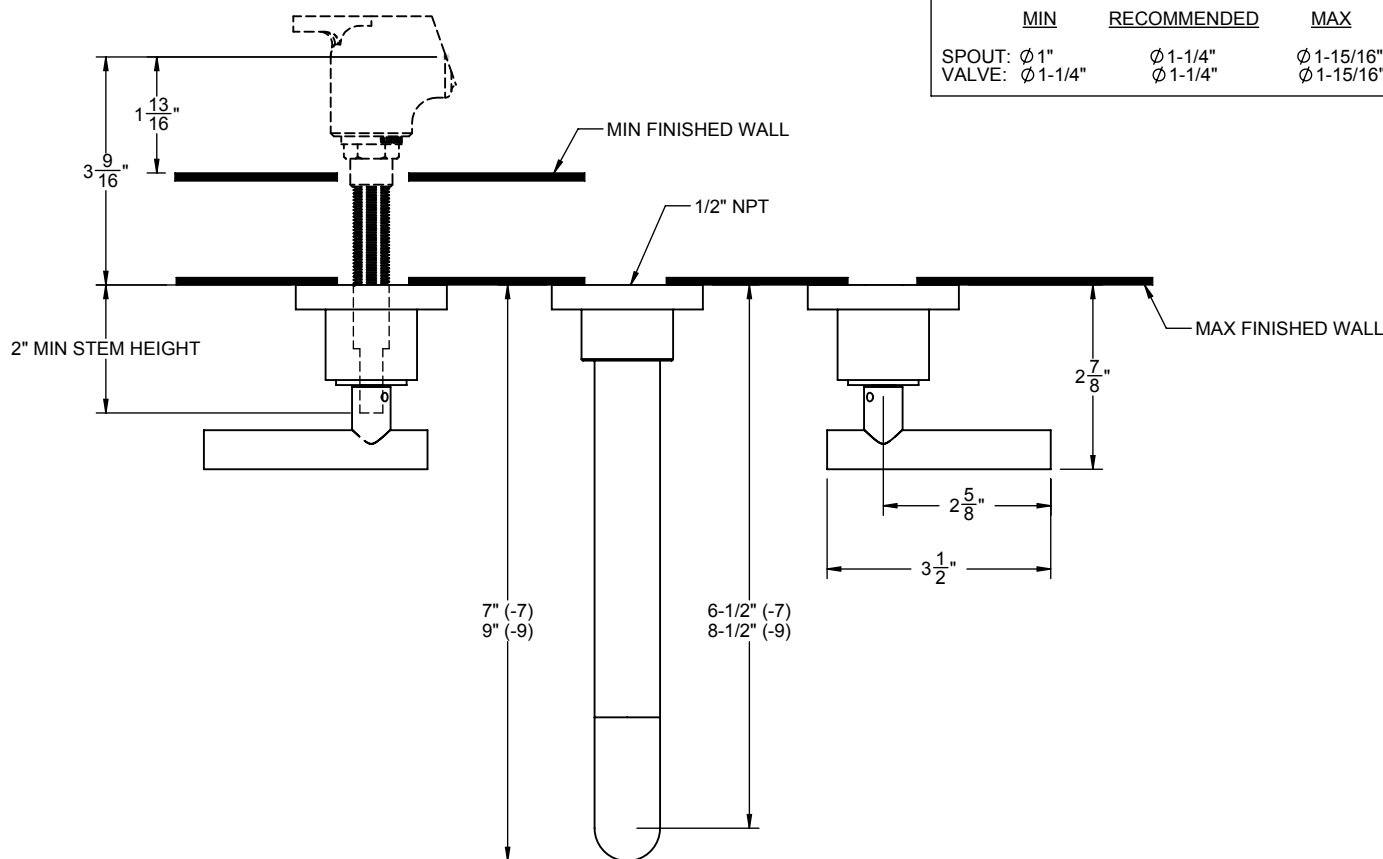
**CF-TO-V6602-7/9**



CF-TO-V6602-9 shown

### THROUGH-HOLE SPECIFICATIONS

	MIN	RECOMMENDED	MAX
SPOUT: $\varnothing 1"$		$\varnothing 1-1/4"$	$\varnothing 1-15/16"$
VALVE: $\varnothing 1-1/4"$		$\varnothing 1-1/4"$	$\varnothing 1-15/16"$



SPECIFICATIONS SUBJECT TO CHANGE WITHOUT NOTICE

ALL DIMENSIONS SHOWN TO NEAREST 1/16"