



California Faucets®

KITCHEN

CONTEMPORARY HOT ONLY WATER DISPENSER

Features

- Over 28 finishes including 13 PVD finishes
- All brass construction
- 180° rotating spout
- Insulated body and spout to reduce heat transfer to faucet
- Self-closing handle
- Max flow rate: 1.8 gpm (6.8 L /min); varies with hot water tank
- Faucet is **not** compatible with RO filter unit
- Requires Hot Water Tank (9628SS) sold separately

Codes/Standards Applicable

Product meets or exceeds the following:

- ASME A112.18.1/CSA B125.1
- NSF 61 and NSF 372
- CEC/DOE
- Commonwealth of MA
- ADA compliant

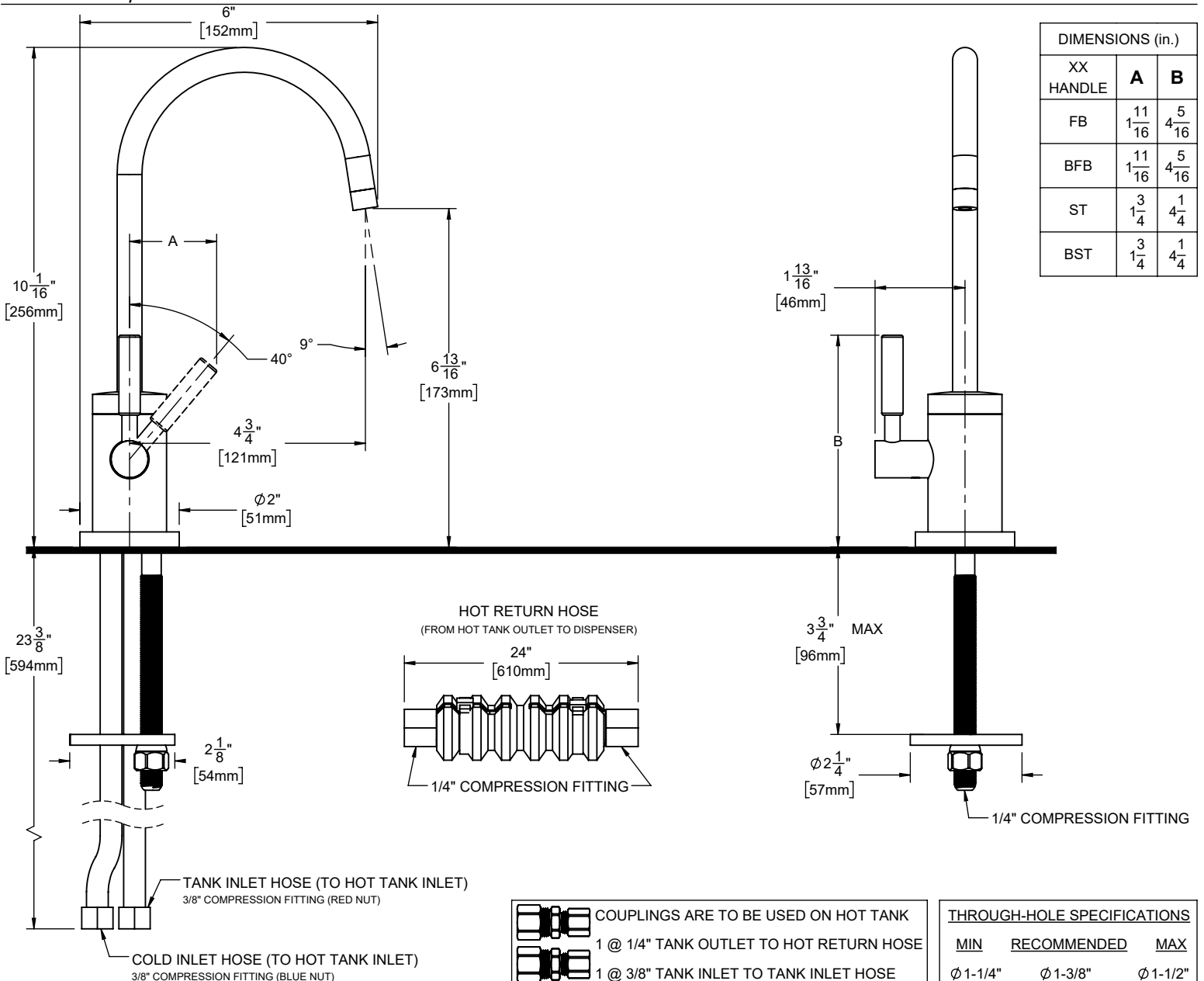


9625-K51-ST shown

9625-K51-BFB
9625-K51-BST
9625-K51-FB
9625-K51-ST



XX = DENOTES HANDLE SHOWN



SPECIFICATIONS SUBJECT TO CHANGE WITHOUT NOTICE

ALL DIMENSIONS SHOWN TO NEAREST 1/16"
[ALL DIMENSIONS SHOWN TO NEAREST 1MM]