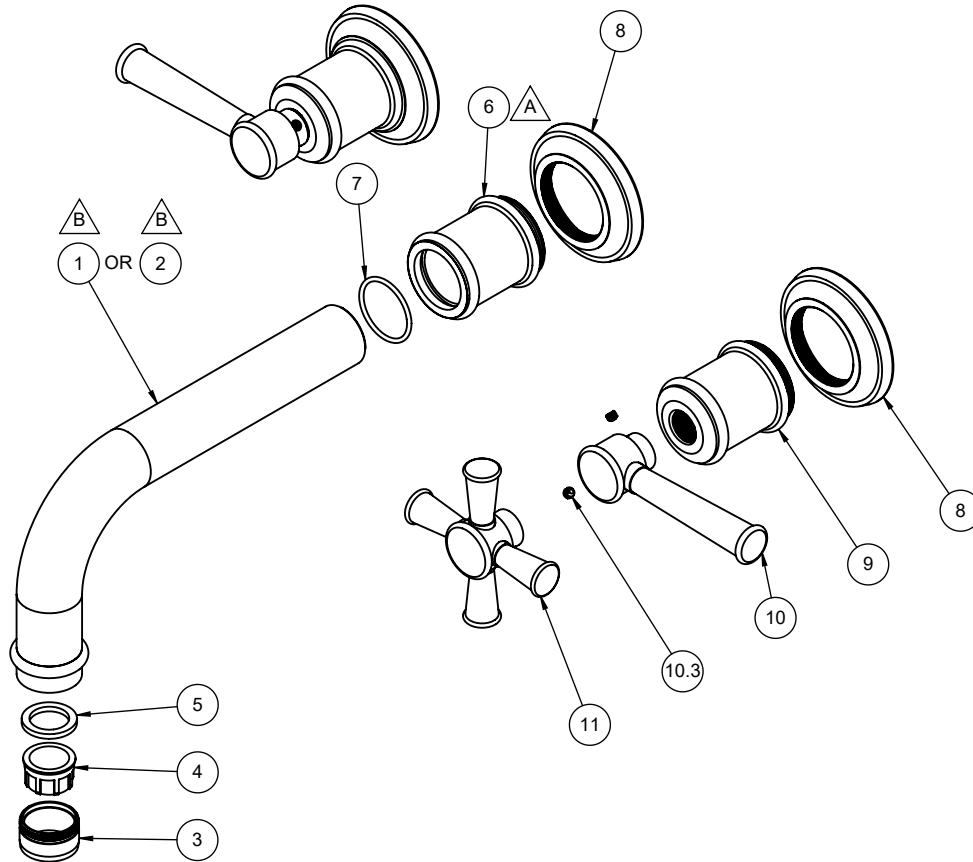


TO-V4802-7
TO-V4802X-7
TO-V4802-9
TO-V4802X-9

- △ A REQUIRES ITEM (7)
- △ B REQUIRES ITEM (3), (4), AND (5)



To order spare parts add and/or replace as stated below:

- SPD- prefix added to part number(s)
- ZZ replaced with finish code (see finish table)
- WW replaced with -90 (light finish) or -96 (dark finish)

Ex: **SPD-7-100463-PC** or **SPD-86030-96**

	ITEM	PART NO.	DESCRIPTION	QTY
for all -7	1	7-100133-ZZ	ASM, VS SPOUT, 7" TRAD TUBE STYLE, "NL"	1
for all -9	2	7-100129-ZZ	ASM, VS SPOUT, 9" TRAD TUBE STYLE, "NL"	1
	3	880168-ZZ	SHELL, STD 15/16"-27, MALE THD	1
	4	880354-81	INSERT, 1.2 GPM STD AERATED (PCA PERLATOR)	1
	5	881829-99	WSHR AERATOR, .839 X .590 X .110 EPDM A70 (NSF 61)	1
	6	10360-ZZ	BASE, VS SPOUT, TRAD	1
	7	87204-80	O-RING Ø25.12 X 1.78 (-022) EPDM A70 (NSF-61 &WRAS)	1
	8	10363-ZZ	RING, BASE, TRAD	3
	9	10359-ZZ	ESCUTCHEON, TRAD	2
for 48 Series	10	7-100114-ZZ	ASM, LEVER HANDLE - TRAD <i>(incl. 10.3)</i>	2
	10.3	86030-WW	SETSCREW 8-32 X 1/8 SCKT HD CUP PT SS	2
for 48X Series	11	7-100113-ZZ	ASM, CROSS HANDLE - TRAD <i>(incl. 10.3)</i>	2
for ITEM 10.3	12	882042-99	KEY, ALLEN, 5/64", BLACK	1