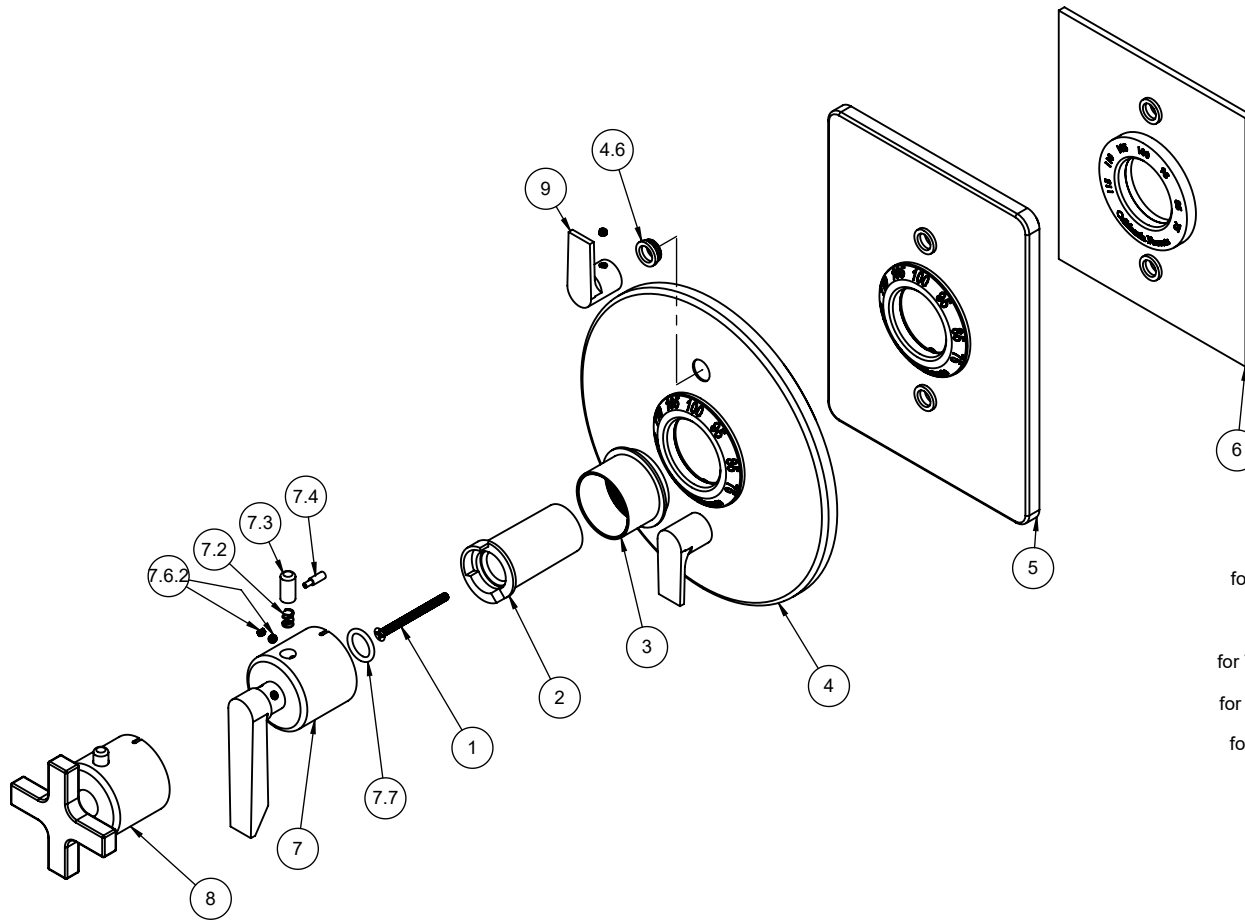


TO-TH2L-45  
 TO-TH2L-45X  
 TO-THC2L-45  
 TO-THC2L-45X  
 TO-THF2L-45  
 TO-THF2L-45X



To order spare parts add and/or replace as stated below:

**SPD-** prefix added to part number(s)  
**-ZZ** replaced with finish code (see finish table)  
**-WW** replaced with **-90** (light finish) or **-96** (dark finish)

Ex: **SPD-7-100463-PC** or **SPD-86030-96**

ITEM	PART NO.	DESCRIPTION	QTY
1	86255-90	SCREW M4 X 0.7 X 50MM PH FLT HD SS	1
2	10092-81	STOP, THERM TEMP, SHORT	1
3	10090-ZZ	SLEEVE, THERMO MOUNTING	1
for TO-TH2L	4	7-100042-ZZ ASM, SHWRPLATE, CONT RD, THERM W/2 VC (incl. 4.6)	1
4.6	223467-99	NYLON BUSHING FOR PBS FACEPLATE	2
for TO-THC2L	5	7-100048-ZZ ASM, SHWRPLATE, CONT SQ. THERM W/ 2 VC (incl. 4.6)	1
for TO-THF2L	6	7-100240-ZZ ASM, SHWRPLATE, CONT FLAT, THERM W/2 VC (incl. 4.6)	1
for 45 Series	7	TH-H-45-ZZ THERM HANDLE KIT (incl. 7.2, 7.3, 7.4, 7.6.2, 7.7)	1
7.2	10098-90	SPRING, Ø.24 X .312 LG, 1.4 LB/IN	1
7.3	10093-81	BUTTON, BLACK THERM	1
7.4	10062-98	PIN, THERMO BONNET	1
7.6.2	86030-WW	SETScrew 8-32 X 1/8 SCKT HD CUP PT SS	2
7.7	87222-80	O-RING Ø13.94 X 2.62 (-113) EPDM A70 (NSF61-12 & WRAS)	1
for 45X Series	8	TH-H-45X-ZZ THERM HANDLE KIT (incl. 7.2, 7.3, 7.4, 7.6.2, 7.7)	1
9	7-100179-ZZ	ASM, THERM VC - TRANS (incl. 7.6.2)	2
for ITEM 7.6.2	10	882042-99 KEY, ALLEN, 5/64", BLACK	1