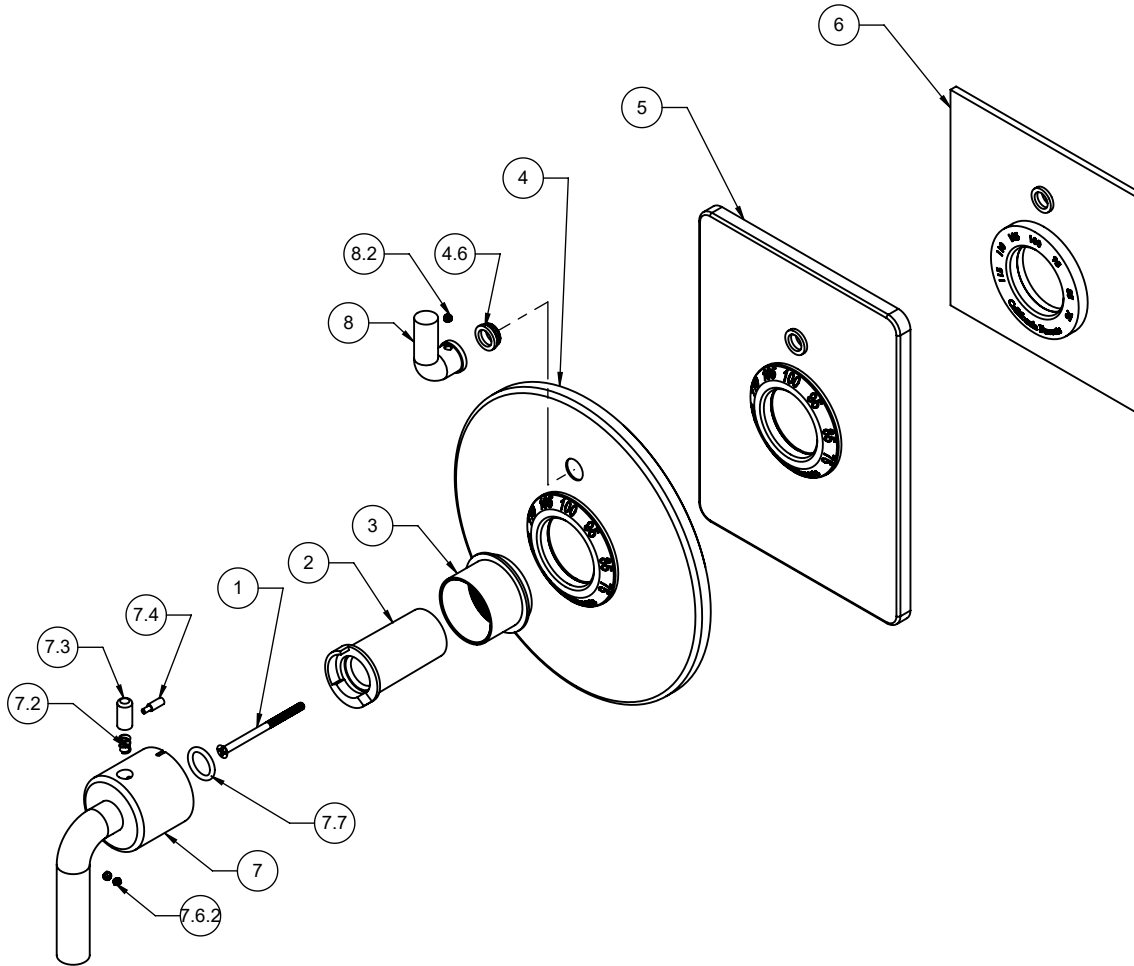


TO-TH1L-74
TO-THC1L-74
TO-THF1L-74



To order spare parts add and/or replace as stated below:

SPD- prefix added to part number(s)
-ZZ replaced with finish code (see finish table)
-WW replaced with **-90** (light finish) or **-96** (dark finish)

Ex: **SPD-7-100463-PC** or **SPD-86030-96**

for TO-TH1L

for TO-THC1L

for TO-THF1L

for ITEM 7.6.2 & 8.2

ITEM	PART NO	DESCRIPTION	QTY.
1	86059-90	SCREW M4 X 0.7 X 60MM PH FLT HD SS	1
2	10092-81	STOP, THERM TEMP, SHORT	1
3	10090-ZZ	SLEEVE, THERMO MOUNTING	1
for TO-TH1L	4	7-100041-ZZ ASM, SHWRPLATE, CONT RD, THERM W/1VC (incl. 4.6)	1
	4.6	223467-99 NYLON BUSHING FOR PBS FACEPLATE	1
for TO-THC1L	5	7-100047-ZZ ASM, SHWRPLATE, CONT SQ, THERM W/1VC (incl. 4.6)	1
for TO-THF1L	6	7-100239-ZZ ASM, SHWRPLATE, CONT FLAT, THERM W/1 VC (incl. 4.6)	1
	7	TH-H-74-ZZ THERM HANDLE KIT (incl. 7.2, 7.3, 7.4, 7.6.2, 7.7)	1
	7.2	10098-99 SPRING, Ø.24 X .312 LG, 1.4 LB/IN	1
	7.3	10093-81 BUTTON, BLACK THERM	1
	7.4	10062-98 PIN, THERMO BONNET	1
	7.6.2	86030-WW SETSCREW 8-32 X 1/8 SCKT HD CUP PT SS	2
	7.7	87222-80 O-RING Ø13.94 X 2.62 (-113) EPDM A70 (NSF61-12 & WRAS)	1
	8	7-100181-ZZ ASM, THERM VC - MODERN (incl. 8.2)	1
	8.2	86030-WW SETSCREW 8-32 X 1/8 SCKT HD CUP PT SS	1
	9	882042-99 KEY, ALLEN, 5/64", BLACK	1