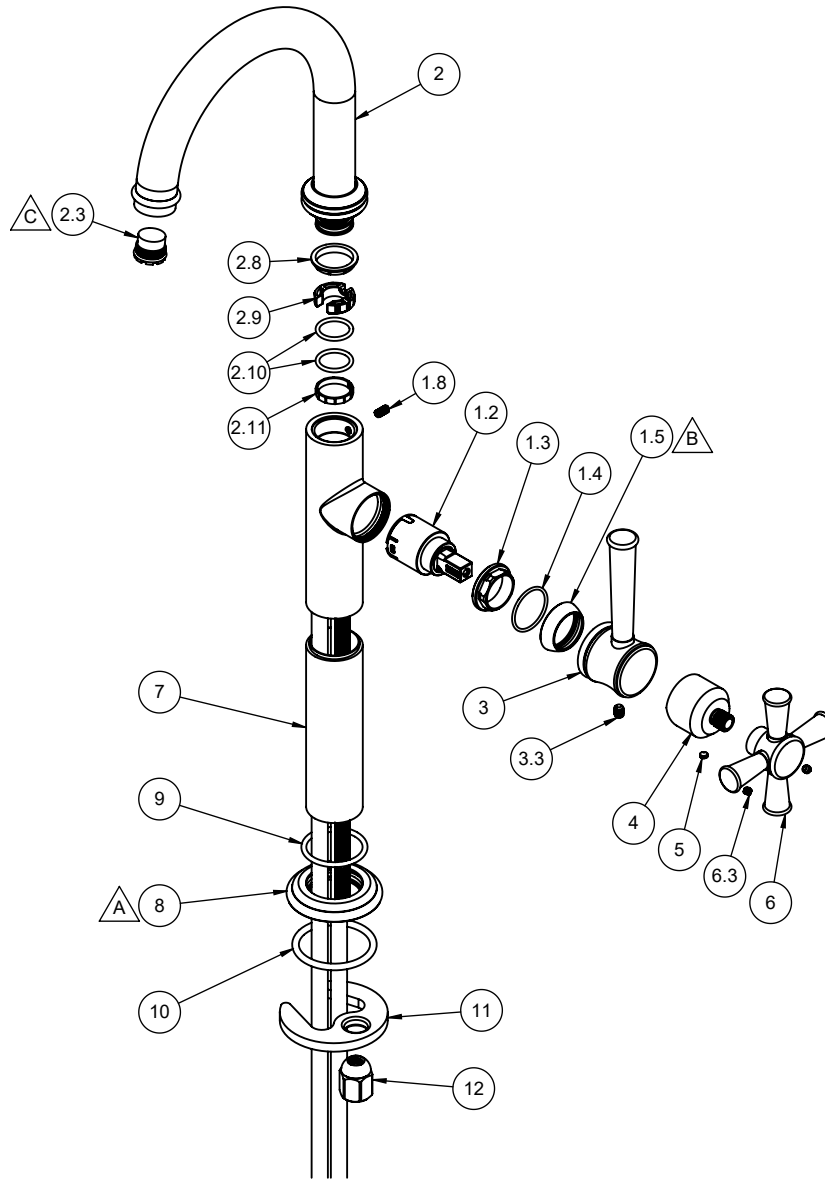


- △ A REQUIRES ITEM 9, AND 10
- △ B REQUIRES ITEM 1.4
- △ C REQUIRES ITEM 14



4809-2 **4809-1**
4809X-2 **4809X-1**

To order spare parts add and/or replace as stated below:
SPD- prefix added to part number(s)
-ZZ replaced with finish code (see finish table)
-WW replaced with **-90** (light finish) or **-96** (dark finish)
 Ex: **SPD-7-100463-PC** or **SPD-86030-96**

ITEM	PART NO.	DESCRIPTION	QTY
1.2	880102-99	CART 25MM, SNGL LVR	1
1.3	10555-98	NUT, 25MM CART KIT PACKING	1
1.4	87145-80	O-RING Ø23.00 X 1.50 (NA) BUNA-N A70	1
1.5	10556-ZZ	BONNET, TRANS KIT	1
1.8	86032-WW	SETSCREW 8-32 X 5/16 SCKT HD CUP PT SS	1
2	7-100542-ZZ	ASM, Ø22MM SHBF SPOUT, TRAD <i>(incl. 2.3, 2.8, 2.9, 2.10, 2.11)</i>	1
2.3	880356-81	INSERT, 1.2 GPM, TT LAMINAR (CACHE)	1
2.8	10558-81	BUSHING, KIT SPT ADPTR	1
2.9	11235-81	BUSHING, SHBF SPT ADAPTER	1
2.10	87019-80	O-RING Ø16.00 X 2.00 (NA) EPDM (NSF 61-18)	2
2.11	11301-81	FRICTION RING, SHBF, NSF 61	1
for 48 Series	3	7-100556-ZZ ASM, TRAD 48 SHBF LEVER <i>(incl. 3.3)</i>	1
for 48 Series	3.3	86070-90 SETSCREW 10-24 X 1/4 SCKT HD CUP PT SS	1
for 48X Series	4	11189-ZZ HDL HUB, SHBF	1
for 48X Series	5	86170-90 SETSCREW 8-32 X 1/8" SCKT CONE PT SS	1
for 48X Series	6	7-100113-ZZ ASM, CROSS HANDLE - TRAD <i>(incl. 6.3)</i>	1
for 48X Series	6.3	86030-WW SETSCREW 8-32 X 1/8 SCKT HD CUP PT SS	2
for all -2	7	11190-ZZ BODY EXTENSION, 30MM X 107MM, SHBF	1
	8	11220-ZZ TRAD. BASE, SHBF	1
	9	87147-80 O-RING Ø29.82 X 2.62 (-123) BUNA-N A70	1
	10	87133-80 O-RING Ø37.69 X 3.53(-222) BUNA-N A70	1
	11	880309-98 MOUNTING BRACKET, SINGLE HOLE CRESCENT	1
	12	10184-98 NUT, HEX W/ DOME	1
	14	223472-99 KEY, TT CACHE AERATOR INSERT	1
for ITEM 1.8, 5, & 6.3	18	882042-99 KEY, ALLEN, 5/64", BLACK	1
for ITEM 3.3	19	882043-99 KEY, ALLEN, 3/32", BLACK	1